

Welcome!

Attendees are muted on entry
The meeting will begin shortly

BUILD



Travel During Construction

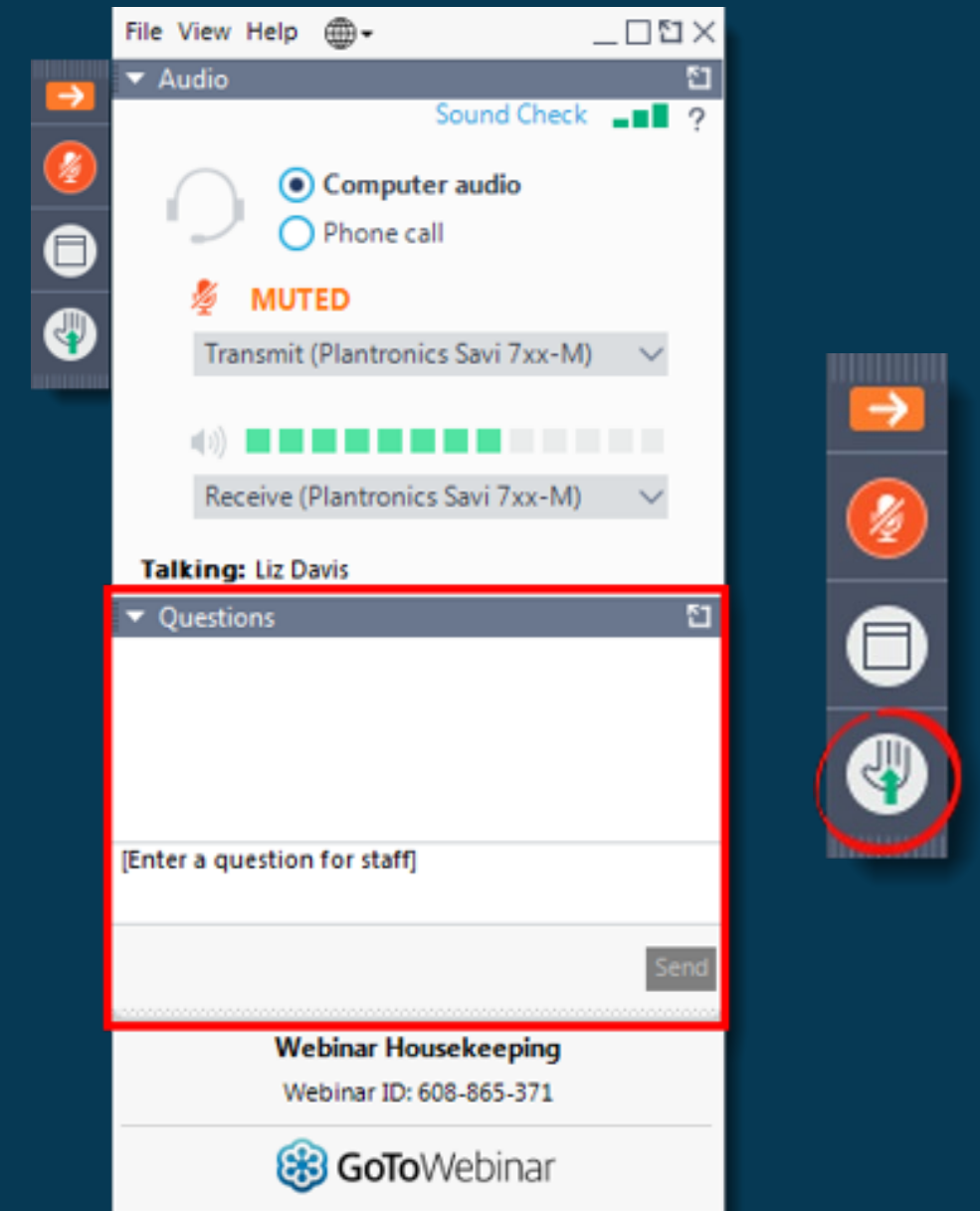
Public Meeting

Aug 11, 2020



How this will work, virtually

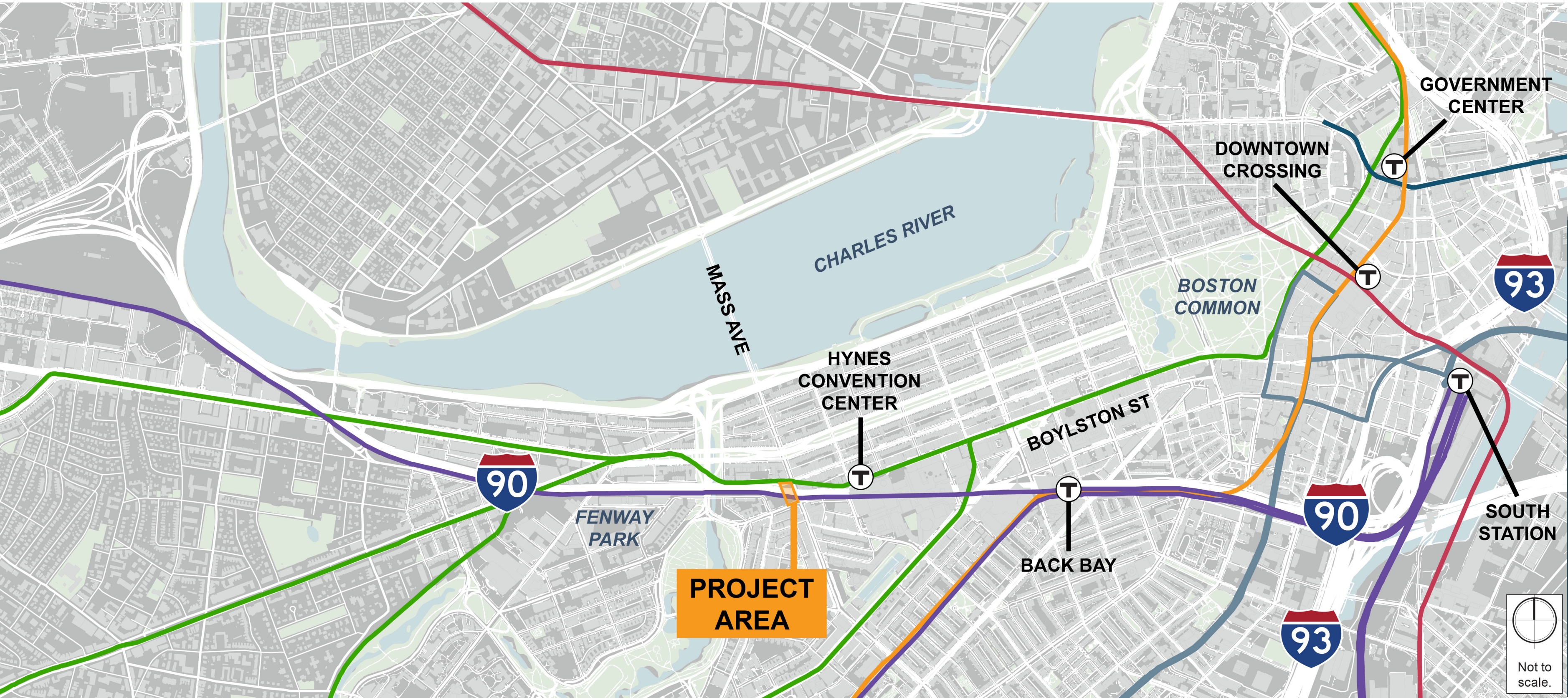
- Everyone muted during presentation
- As we go, please submit text questions and comments using the Questions panel
- We'll answer text questions after the presentation
- If any questions remain after text, 'Raise Your Hand' to be unmuted for verbal questions



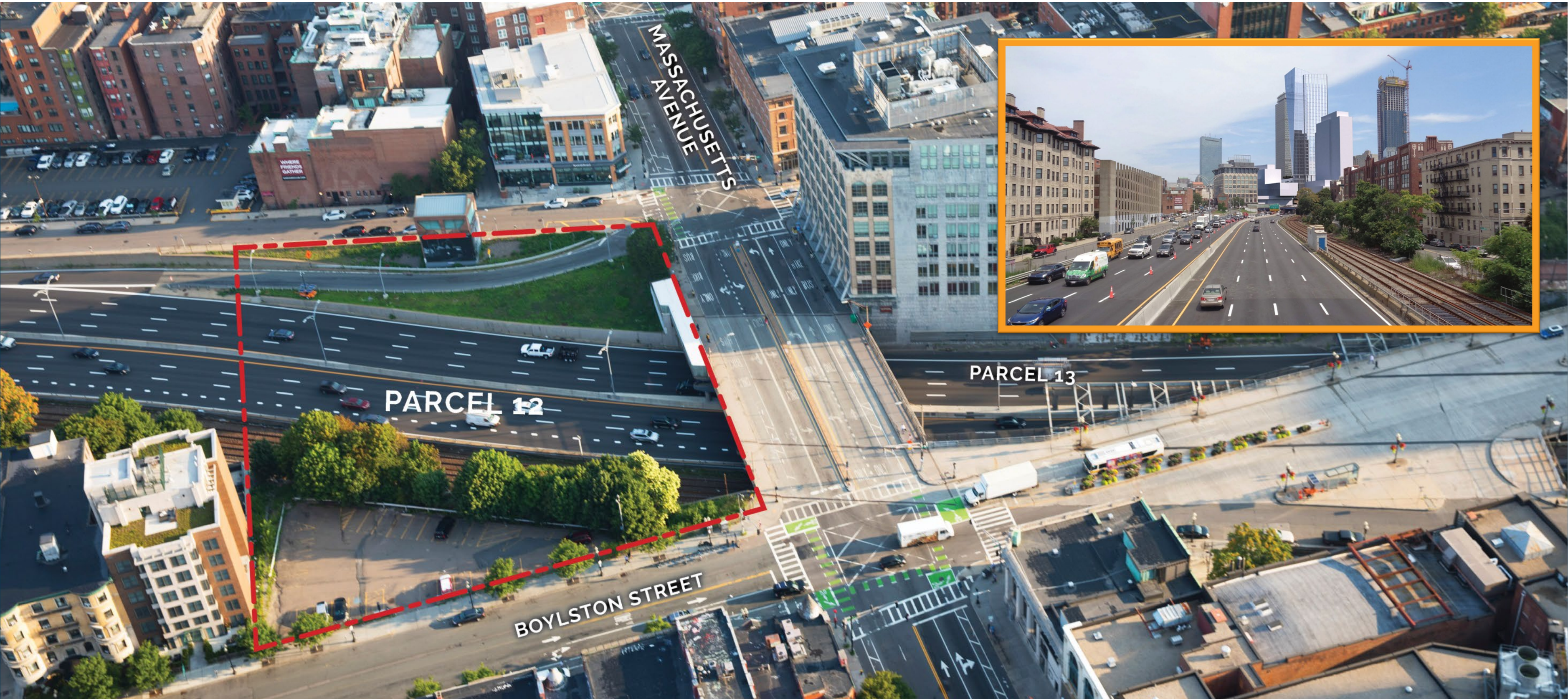
The Site Today & Tomorrow
Building Parcel 12
Travel Resources
Stay Informed

The Site Today & Tomorrow
Building Parcel 12
Travel Resources
Stay Informed

The Site Today



The Site Today





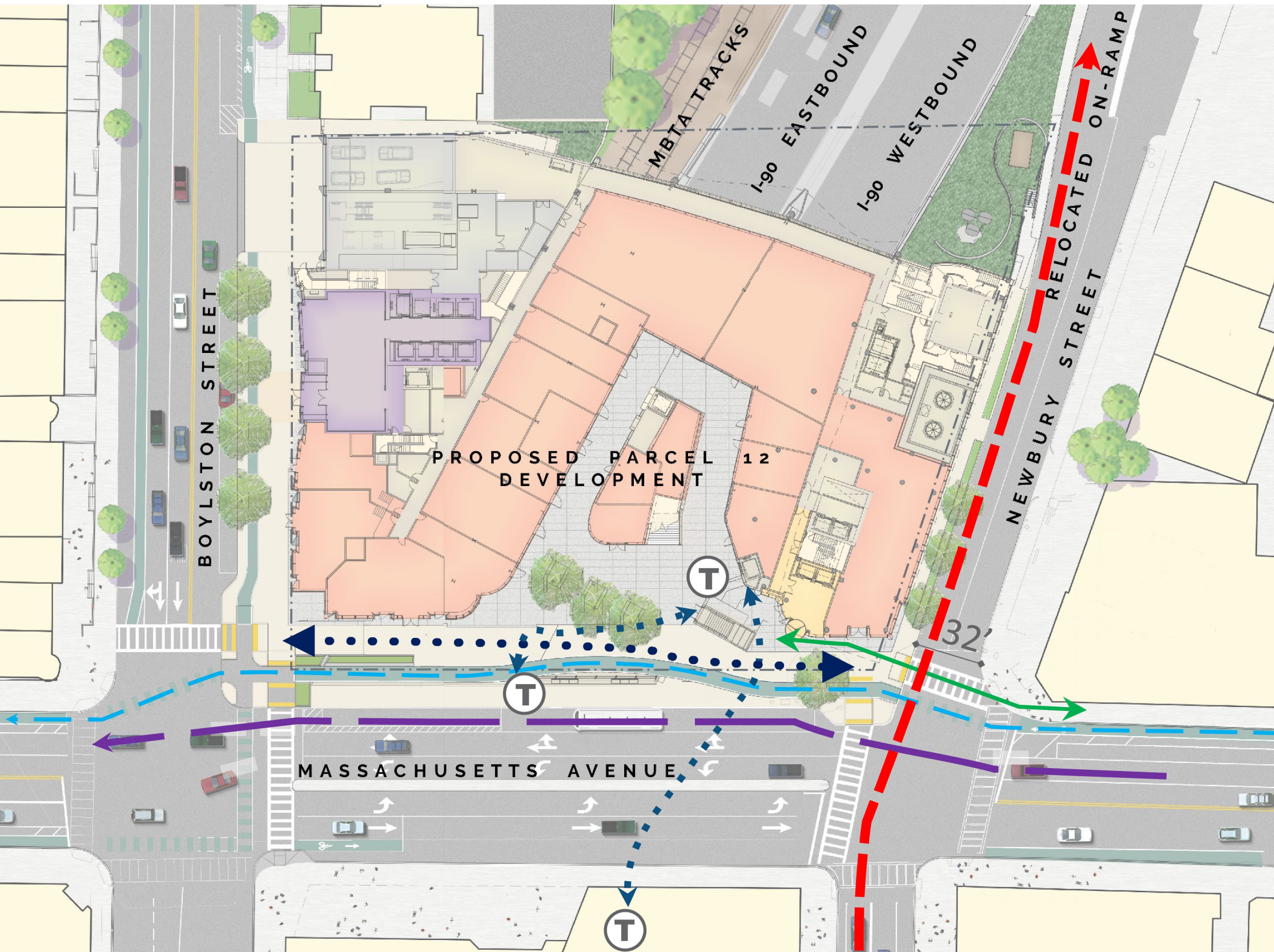
The Site Tomorrow: LOCAL/REGIONAL PUBLIC BENEFITS



- New mixed-use complex with retail, office, hotel
- 1,300+ construction jobs and 2,000 permanent jobs
- Approx. \$30M of annual state tax revenues
- Approx. \$4M one-time contributions to jobs and housing funds in addition to annual tax revenue



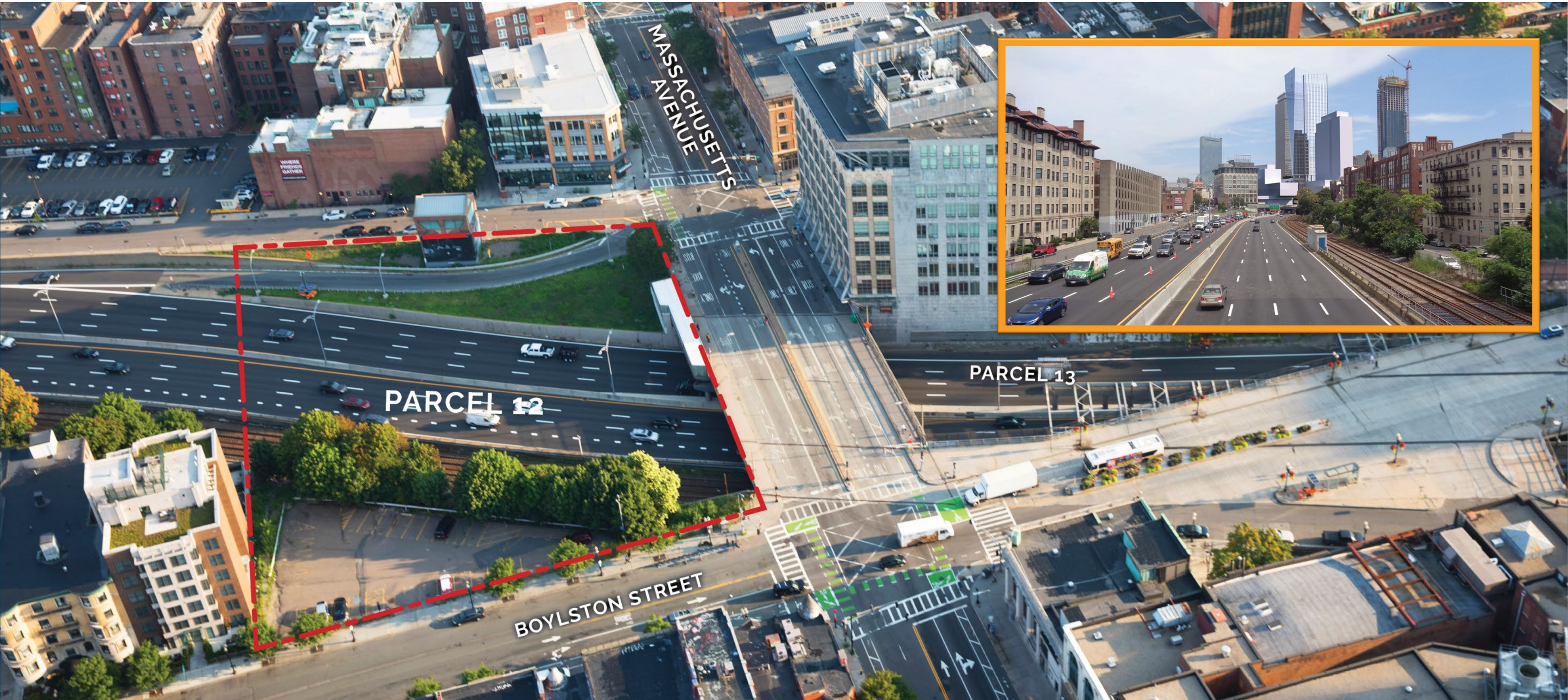
The Site Tomorrow: LOCAL/REGIONAL PUBLIC BENEFITS



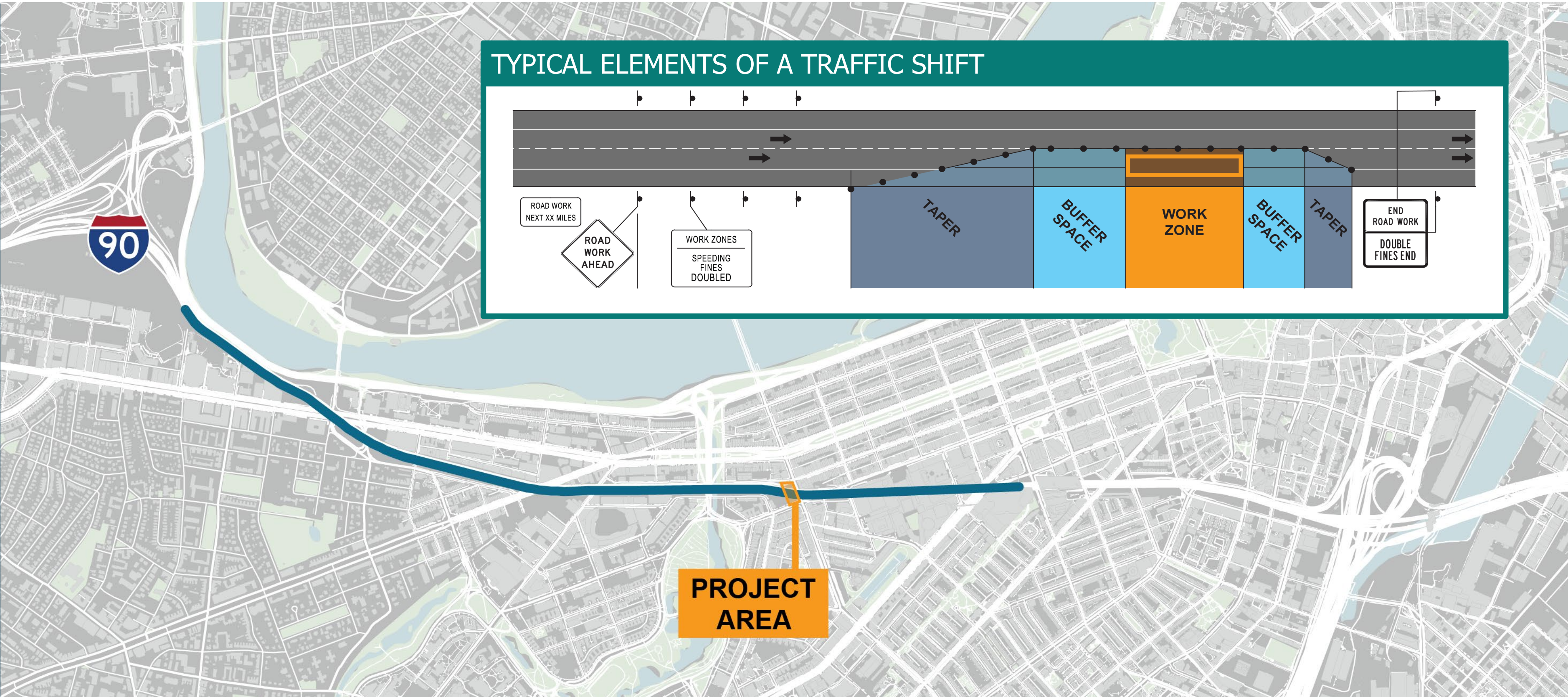
- Reconfigured, safer on-ramp
- A modern Mass Ave
 - Intersection/ramp clarity
 - Dedicated bike lane
 - Bus stop improvements
- New MBTA entrance
- Enhanced pedestrian experience & amenities
 - New public civic space – 1/2 acre

The Site Today & Tomorrow
Building Parcel 12
Travel Resources
Stay Informed

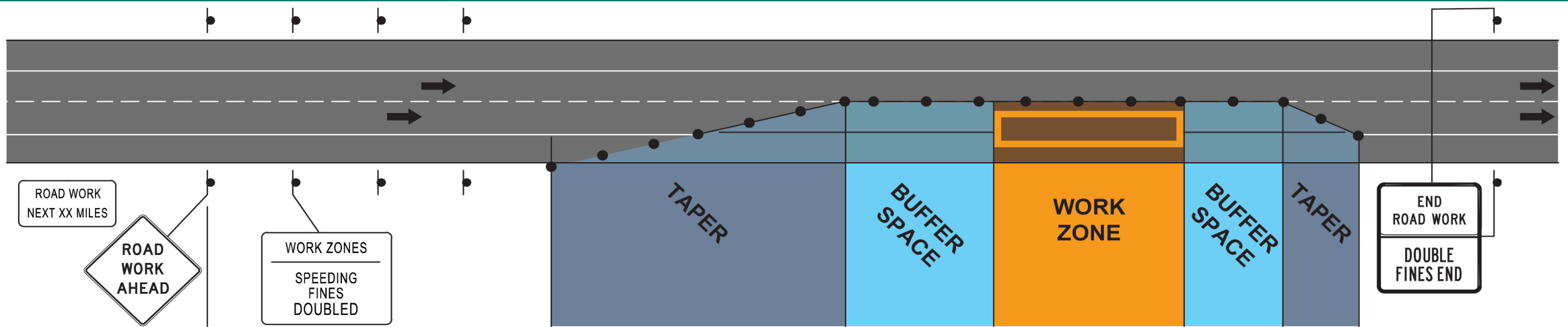
Building Parcel 12



Building Parcel 12: PROJECT AREA

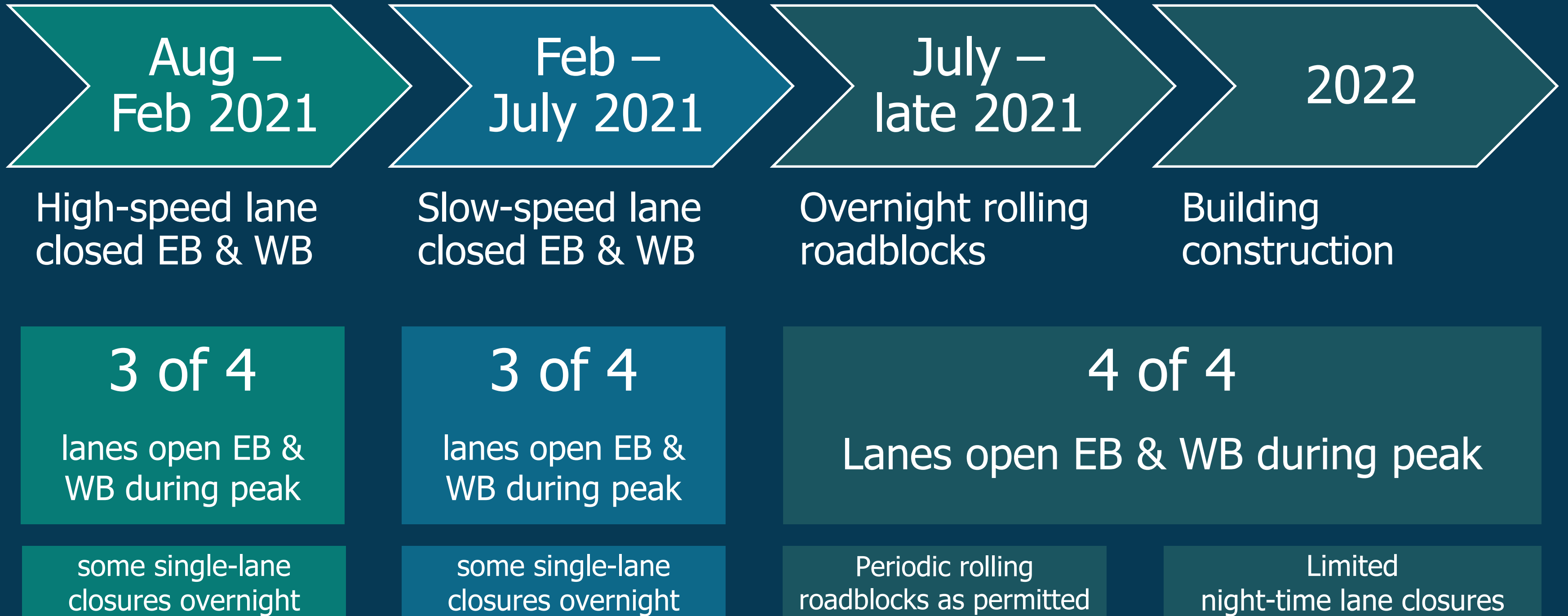


TYPICAL ELEMENTS OF A TRAFFIC SHIFT



PROJECT AREA

Building Parcel 12: TURNPIKE LANE CLOSURES



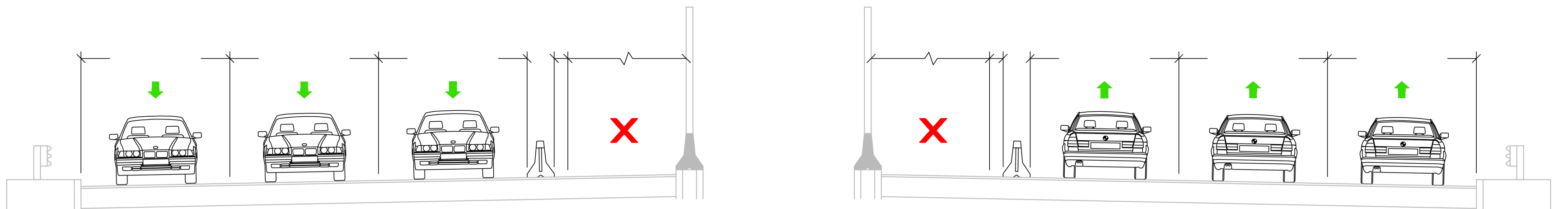
Building Parcel 12: TURNPIKE LANE CLOSURES

Aug –
Feb 2021

High-speed lane
closed EB & WB

- Workzone and barrier set up in high speed (left) travel lane in each direction
- 3 lanes open in each direction on Turnpike

Eastbound: Allston Viaduct to Mass Ave EB
Westbound: Prudential Tunnel to Mass Ave WB



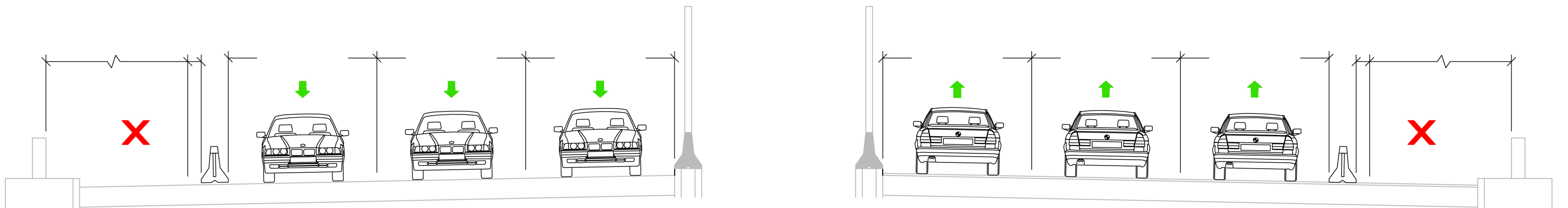
Building Parcel 12: TURNPIKE LANE CLOSURES

Feb –
July 2021

Slow-speed lane
closed EB & WB

- Workzone and barrier set up in low speed (right) travel lane in each direction
- 3 lanes open in each direction on Turnpike

Eastbound: Allston Viaduct to Mass Ave EB
Westbound: Prudential Tunnel to Mass Ave WB



Building Parcel 12: OVERNIGHT TRAFFIC

July –
late 2021

Overnight rolling
roadblocks

- 4 lanes available during days
- Periodic overnight rolling roadblocks as permitted between 12 a.m. to 5 a.m.
- Avoids completely closing highway for safety during overhead work

Building Parcel 12: OVERNIGHT TRAFFIC

What is a rolling roadblock?

- Well-established highway construction technique for safety of traveling public during short-term overhead operations
- Coordinated with and approved by MassDOT and Mass State Police
- Moving slowly, State Police & construction pace vehicles reduce speed of traffic to create a 'time gap' for overhead operations
- When operation is complete, pace vehicles move out of the way, allowing traffic to regain posted speed and clear the area
- Repeat as conditions allow and as needed

Building Parcel 12: OFF THE TURNPIKE

Over the course of construction:

- Work per City of Boston Construction Management Plan (CMP)
- Worcester Commuter Rail impacts approx. 4 weekends
- Limited weekend closures of the Mass Ave westbound on-ramp
- Working with MBTA on bus stop impacts and mitigation



Building Parcel 12: RAIL SERVICE CHANGES



- Worcester Commuter Rail weekend diversions

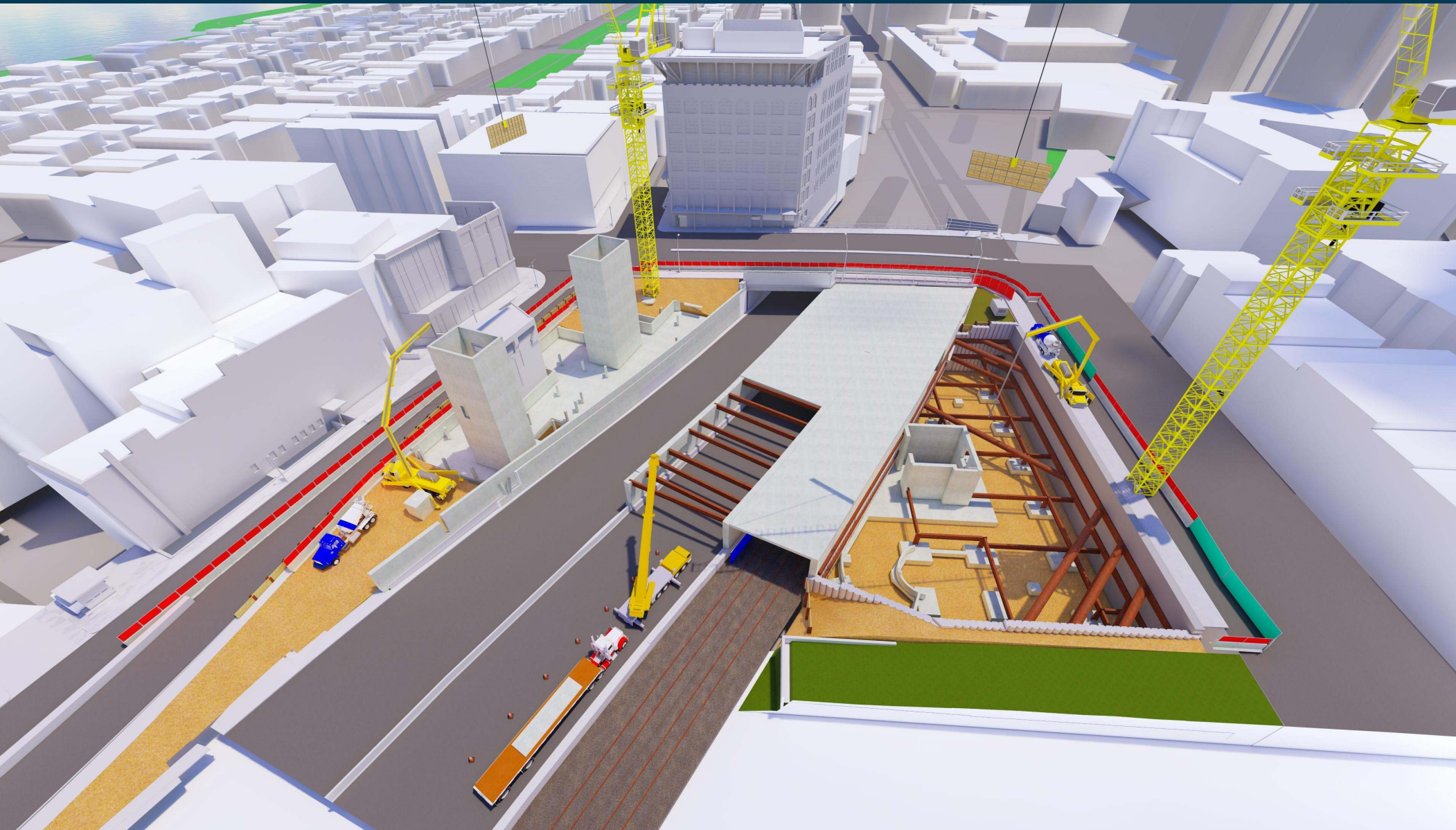
Why
to place steel over tracks

When
anticipated summer 2021

How Long
likely 4 weekends



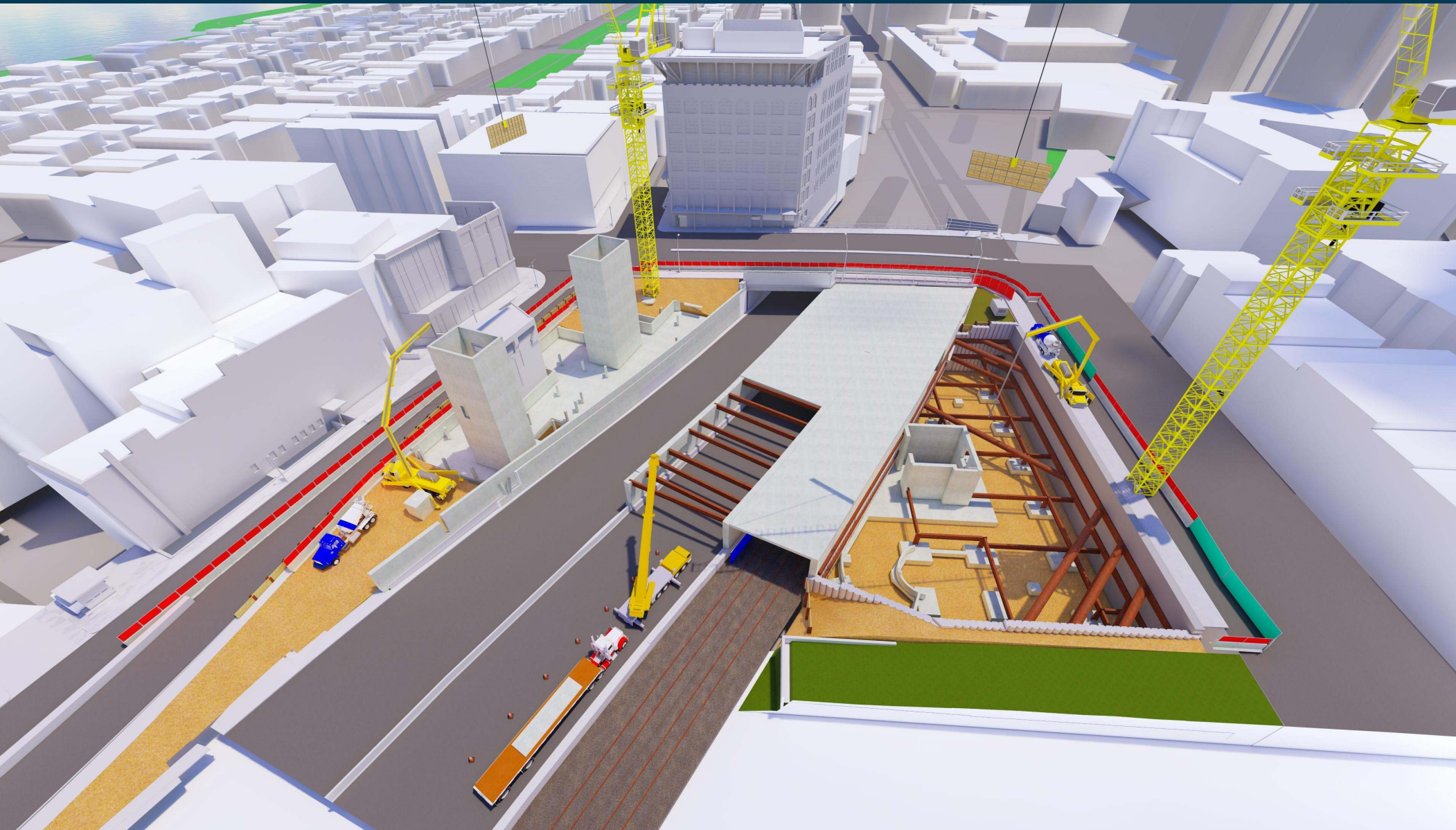
Building Parcel 12: RAIL SERVICE CHANGES



- Schedule and diversions coordinated with MBTA work
 - Positive Train Control
 - MBTA Rail Vision
- During these work weekends:
 - Amtrak bus substitutions
 - MBTA Worcester Line schedule reductions



Building Parcel 12: RAIL SERVICE CHANGES



- Service to Lansdowne Station with direct access to Green Line
 - Passenger Assistant at station to guide riders to service options
- Dedicated communications
 - Announcements on-board and at hub stations alerting riders
 - Signs at every station on the line
 - T Alerts and reminders
 - Dedicated Twitter thread: Follow @MBTA_CR and @MBTA

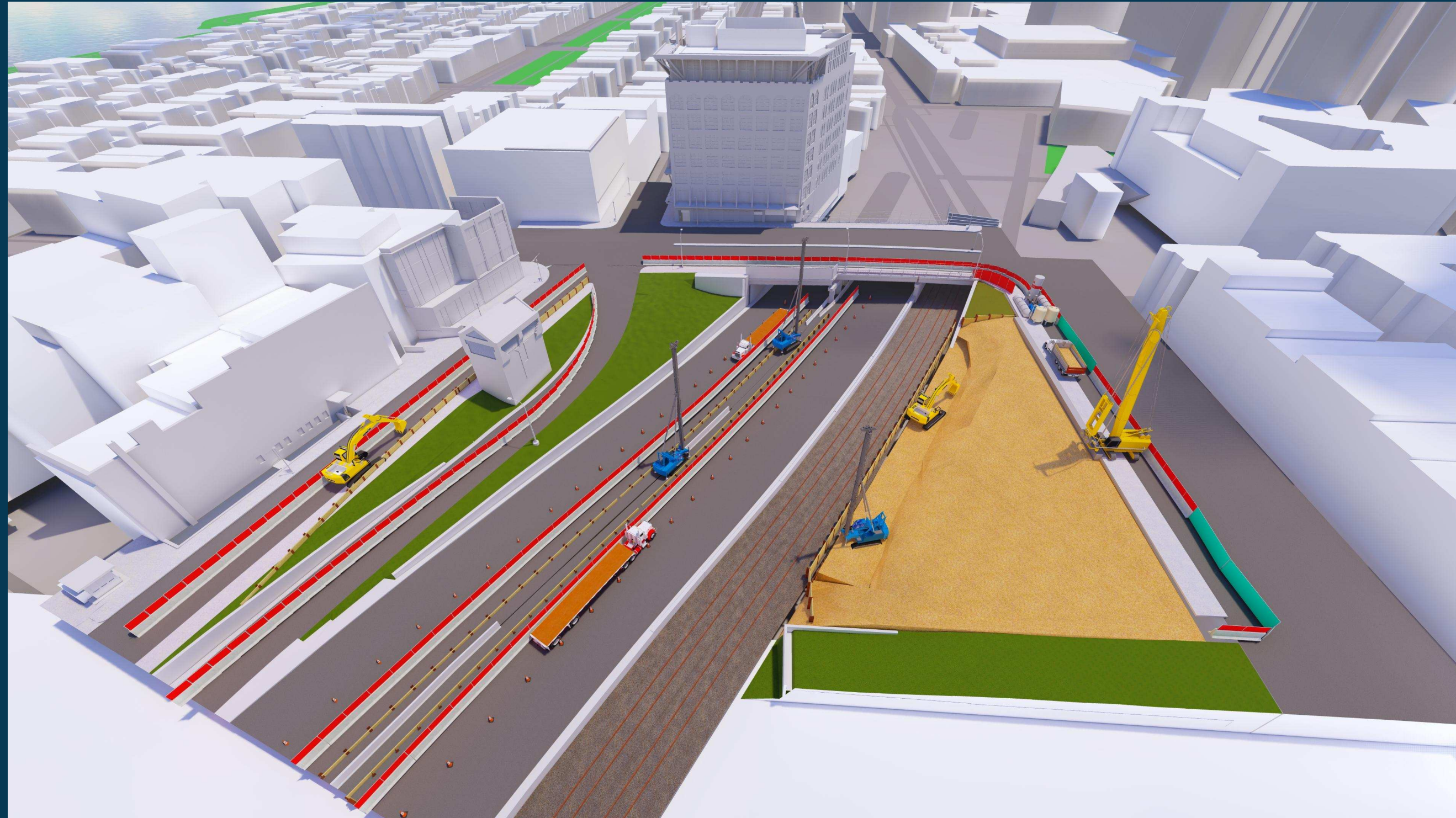


Building Parcel 12: OVERVIEW VISUALIZATION



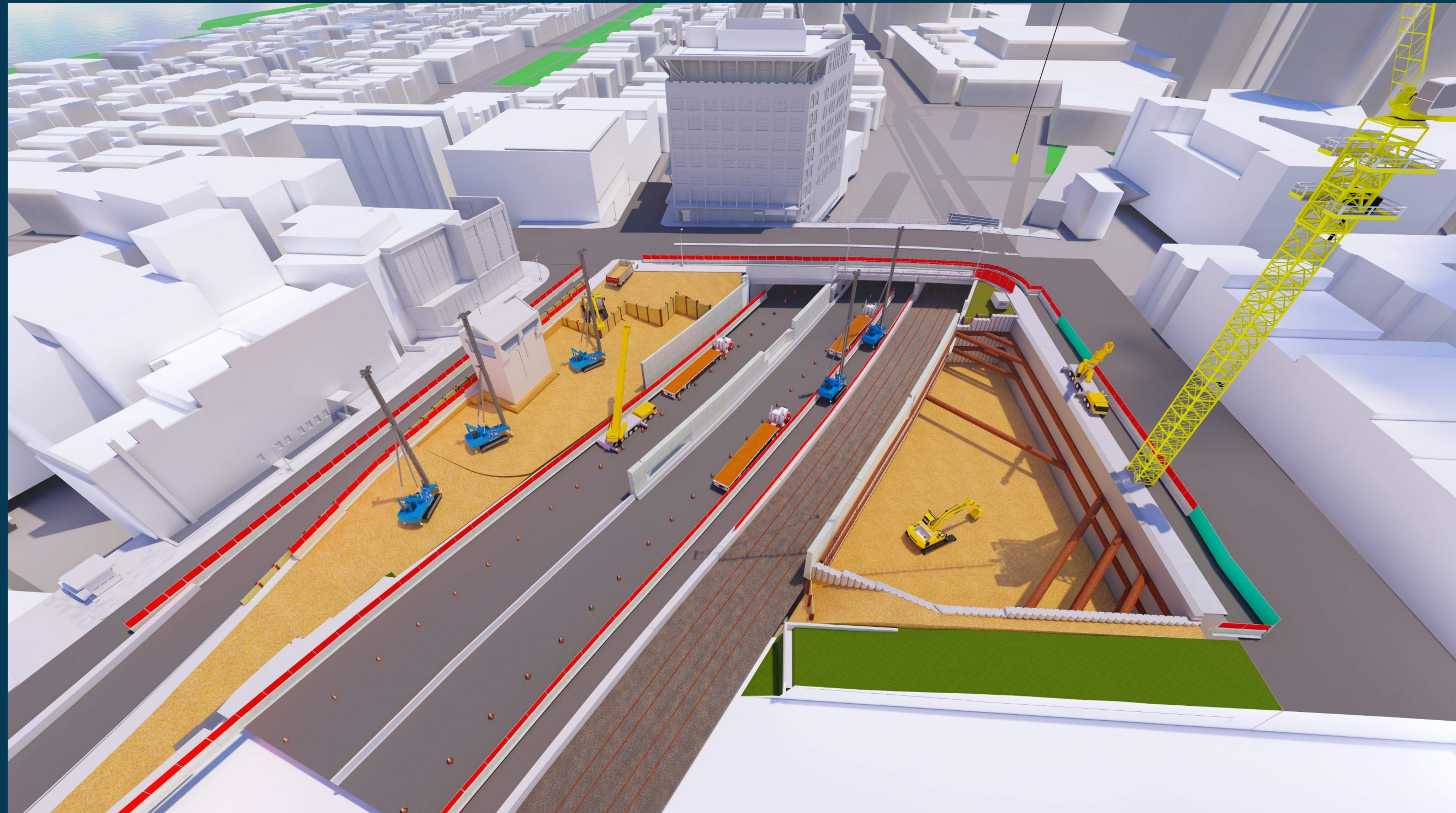


Building Parcel 12: OVERVIEW VISUALIZATION



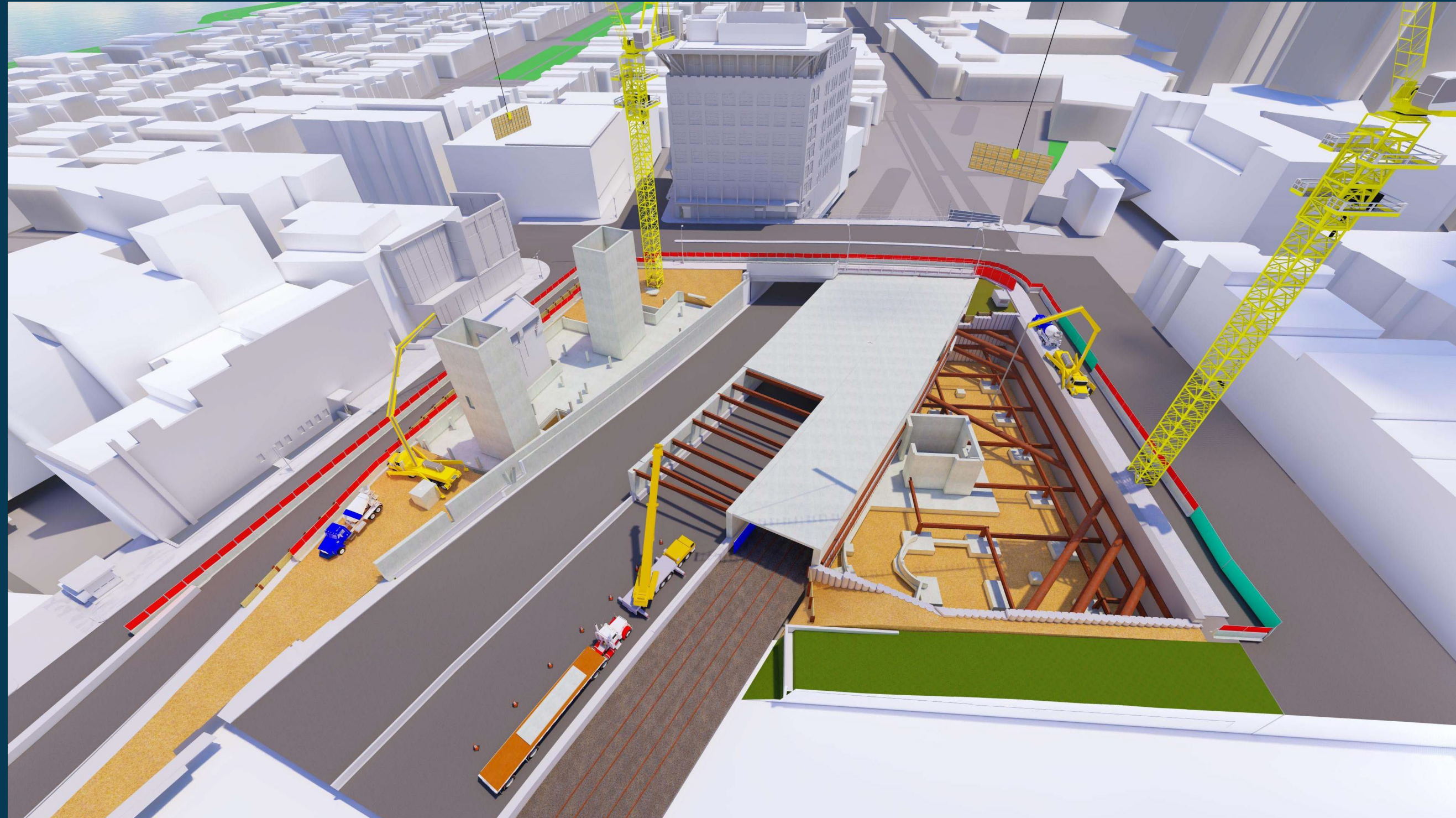


Building Parcel 12: OVERVIEW VISUALIZATION



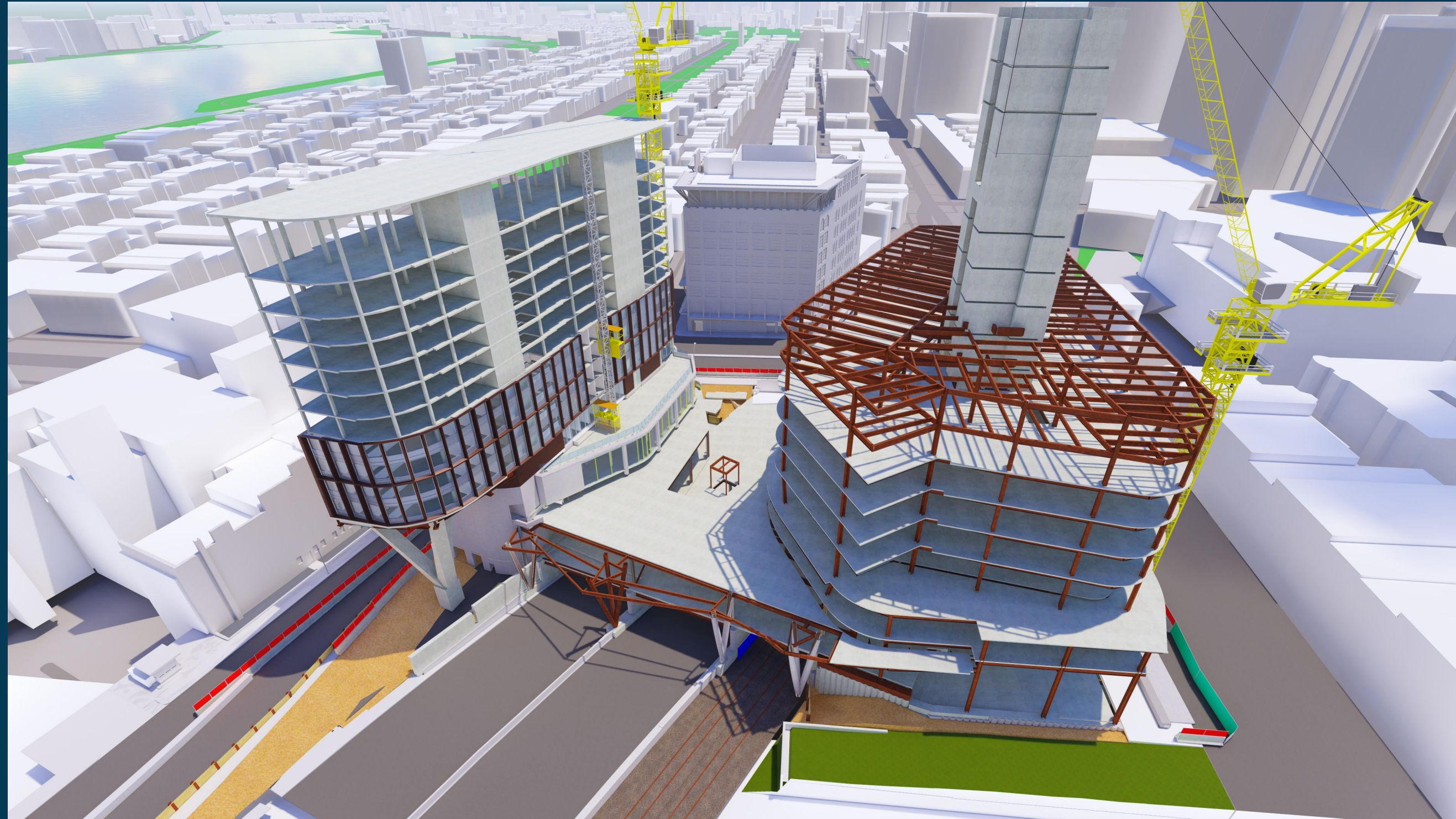


Building Parcel 12: OVERVIEW VISUALIZATION





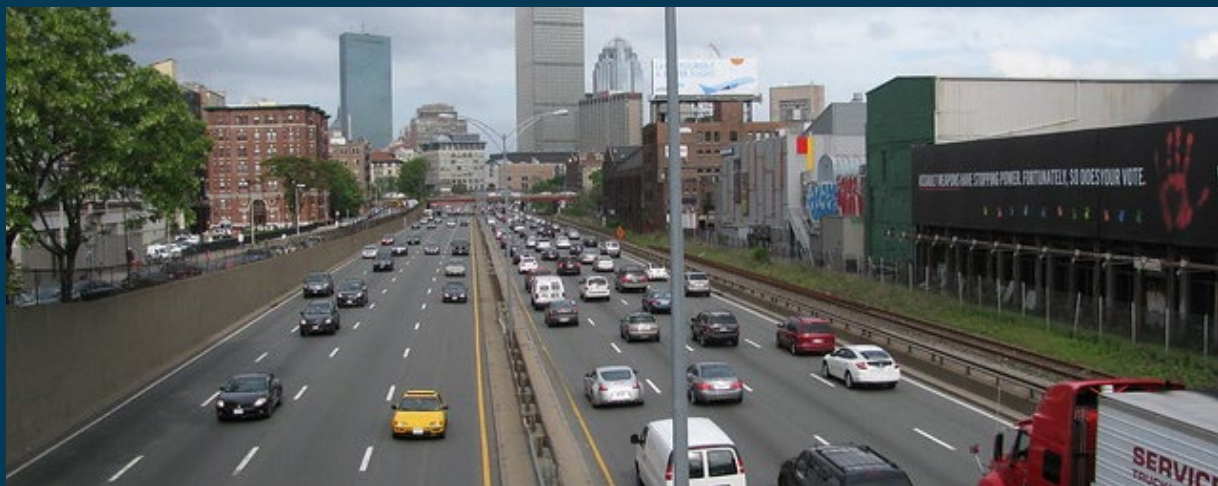
Building Parcel 12: OVERVIEW VISUALIZATION



The Site Today & Tomorrow
Building Parcel 12
Travel Resources
Stay Informed

- Travel Impacts and the Uncertainties of COVID-19
 - Impacts may be lessened if people continue to work from home
 - Traffic is starting to creep back towards pre-COVID levels
 - Sporting events, graduations, student move-ins
- Constant partnership and information sharing between builders, MassDOT, City of Boston
 - Regional Integrated Transportation Information System (RITIS)

Travel Resource: MASS RESOURCES



- Knowledge is power: stay informed
- Plan ahead
- Try something new:
 - Drive smarter
 - **Transition** your commute
 - Fly to Logan

Drive Smarter: PLANNING YOUR TRIP



[Mass511.com](https://www.mass511.com)

Live traffic
resources



[Mass.gov/park-and-ride](https://www.mass.gov/park-and-ride)

Parking lot locations



[MassCommute.com](https://www.masscommute.com)

Find your local TMA

Drive Smarter: DURING YOUR TRIP



- Real Time Traffic Management
 - Live travel times on electronic boards
 - WBZ (1030 AM) traffic updates on the 3's
 - Mass511 – call or text

Transition your commute

- MBTA's trip planner [mbta.com/trip-planner](https://www.mbta.com/trip-planner)
- Beginner's Guide to the Commuter Rail — [mbta.com/guides/commuter-rail-guide](https://www.mbta.com/guides/commuter-rail-guide)
 - Learn how to park at the train — [mbta.com/parking](https://www.mbta.com/parking)
 - Bring your bike on the T — [mbta.com/bikes](https://www.mbta.com/bikes)
- [TransitApp.com](https://www.transitapp.com) — real-time transit & bikeshare info
- [BlueBikes.com](https://www.bluebikes.com) — Metro Boston's bikeshare

Fly to Logan International Airport

- Flying late-night or early morning? Build more time in
- Take Massport's [Logan Express](#)
 - Braintree, Framingham, Woburn
 - direct to terminal, economical parking, express security line
- Use [Massport's Resources](#) to get to & from the airport
 - massport.com/logan-airport/to-from-logan/transportation-options/

**The Site Today &
Tomorrow
Building Parcel 12
Travel Resources
Stay Informed**



buildp12.com



info@buildp12.com



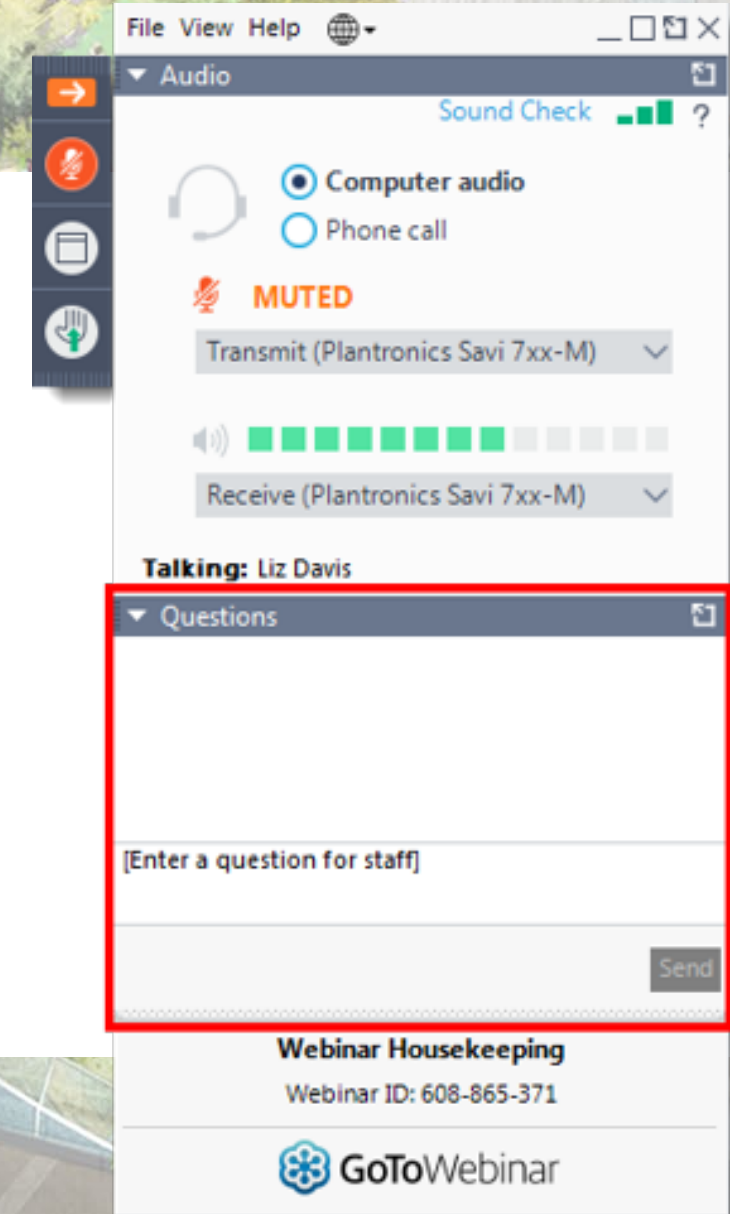
617-356-8149

What do I get?

- Construction updates
- Trip planning info
- Site progress photos
- Travel tips

Questions

1. Text questions via Questions panel
2. Voice questions via "Raise Hand"



The screenshot displays a webinar control panel. At the top, there are menu options: File, View, Help, and a globe icon. Below this is the 'Audio' section, which includes a 'Sound Check' indicator with a green bar and a question mark. There are two radio buttons: 'Computer audio' (selected) and 'Phone call'. A red 'MUTED' indicator is present. Below the muted indicator are two dropdown menus: 'Transmit (Plantronics Savi 7xx-M)' and 'Receive (Plantronics Savi 7xx-M)'. A volume slider is also visible. The 'Talking: Liz Davis' status is shown. The 'Questions' panel is highlighted with a red border and contains a text input field with the placeholder '[Enter a question for staff]' and a 'Send' button. At the bottom of the panel, the webinar title 'Webinar Housekeeping' and ID 'Webinar ID: 608-865-371' are displayed, along with the 'GoToWebinar' logo.

